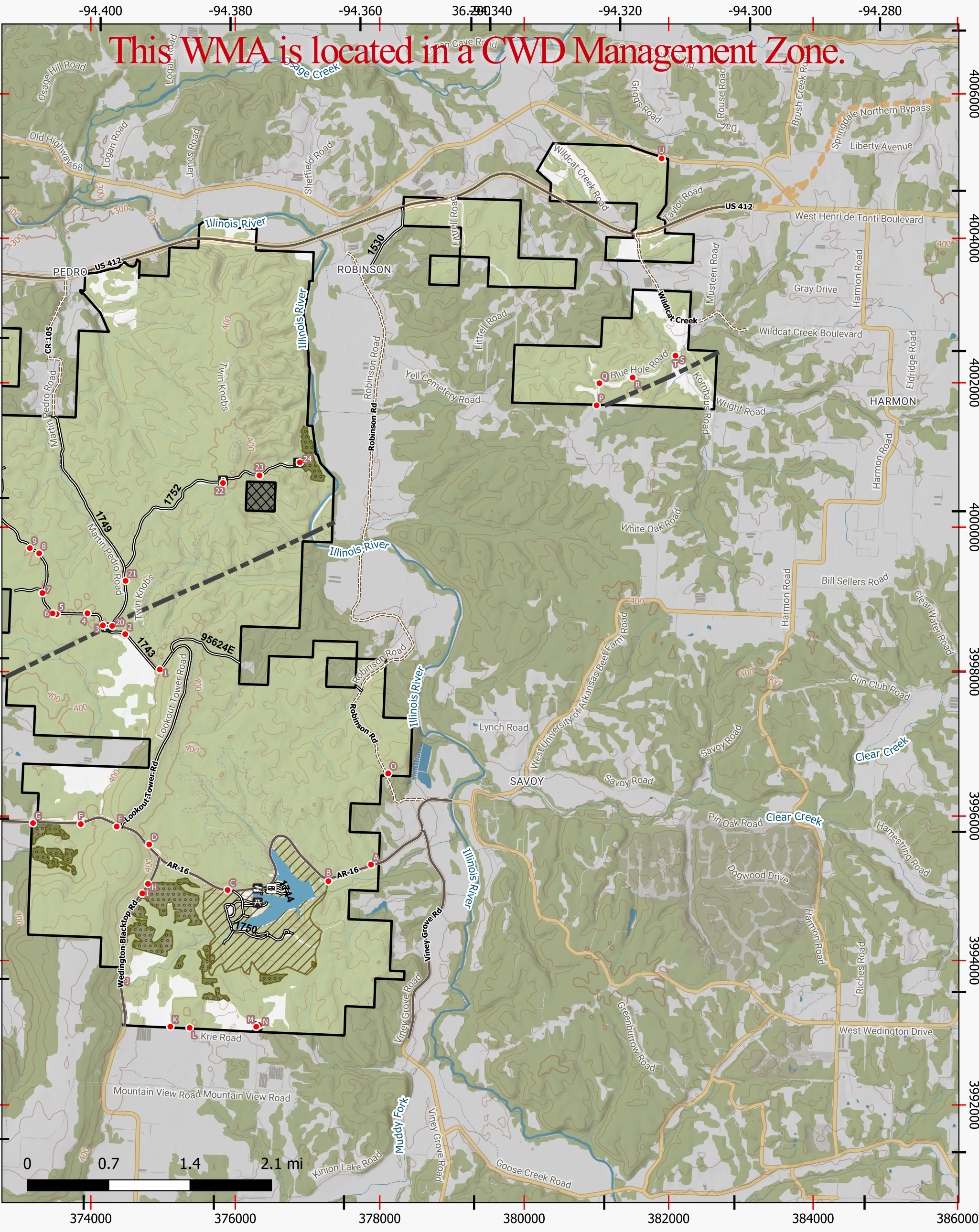
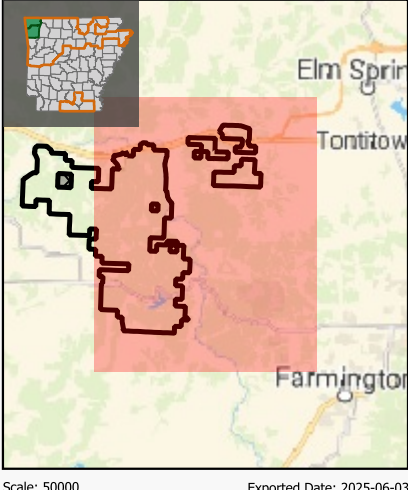


This WMA is located in a CWD Management Zone.



Wedington WMA (Page 1 of 2)



Scale: 50000
Exported Date: 2025-06-03

- | | | | |
|--|---|---|---|
| Buildings/Facilities <ul style="list-style-type: none"> Parking Area Picnic Area RVs Allowed - Fee Boating Access - Paved/Concrete | Physical Line Features <ul style="list-style-type: none"> Gravel Road - Vehicles Allowed Utility Right-of-wayMVUM (USFS)<ul style="list-style-type: none"> Roads open to highway legal vehicles only Yearlong | WMA Boundaries <ul style="list-style-type: none"> WMA Boundary Inholding (Private Property) WMA Management Features <ul style="list-style-type: none"> No Hunting Area | Wildlife Openings <ul style="list-style-type: none"> Wildlife Openings Physical Point Features <ul style="list-style-type: none"> Permanently Closed Gate |
| Public Access <ul style="list-style-type: none"> Paved Road - Vehicles Allowed | | | |

