

Sleepy Hollow Water Trail

Additional Information

Trail Length

5-mile loop.

River Conditions

This portion of the Maumelle River is usually a flat-water float. However, heavy rain and high water can create dangerous conditions. Paddlers may explore upstream into Bringle Creek and the Maumelle River (rocky riffles and downed trees eventually block the route) and downstream to the Arkansas Highway 10 bridge. Canoes and kayaks may be used only in the area of the lake west of the Arkansas Highway 10 Bridge.

Wildlife and Habitat

Watch for wading birds, ospreys, bald eagles, red-shouldered hawks, barred owls, migrating waterfowl and songbirds. Beavers and river otters can be spotted foraging along the river amongst bald cypress and tupelo trees.

Fishing

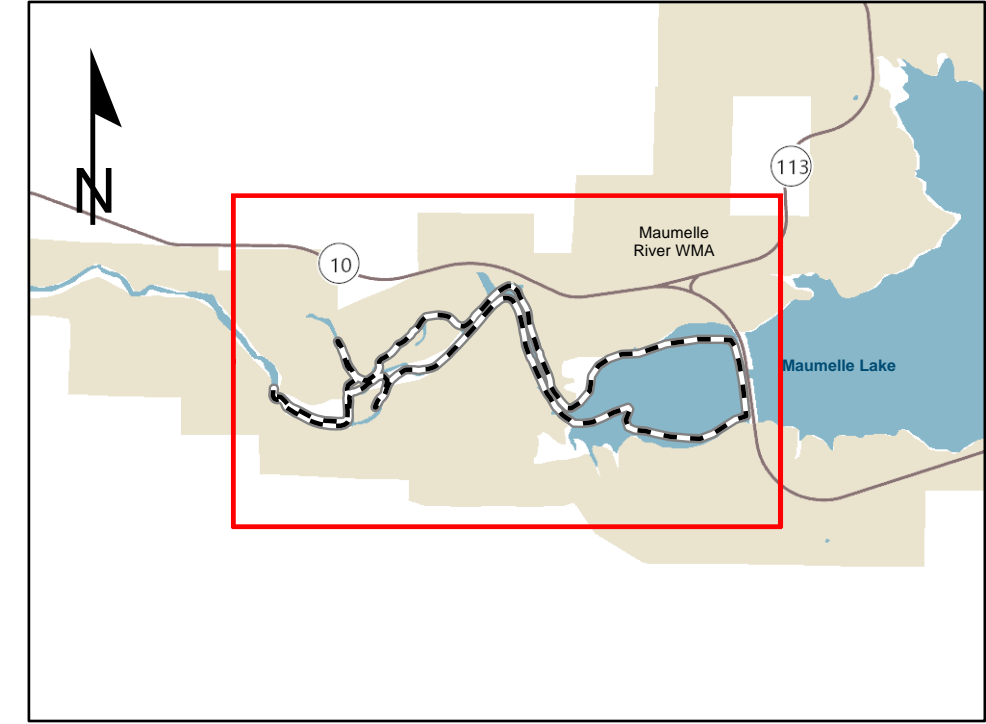
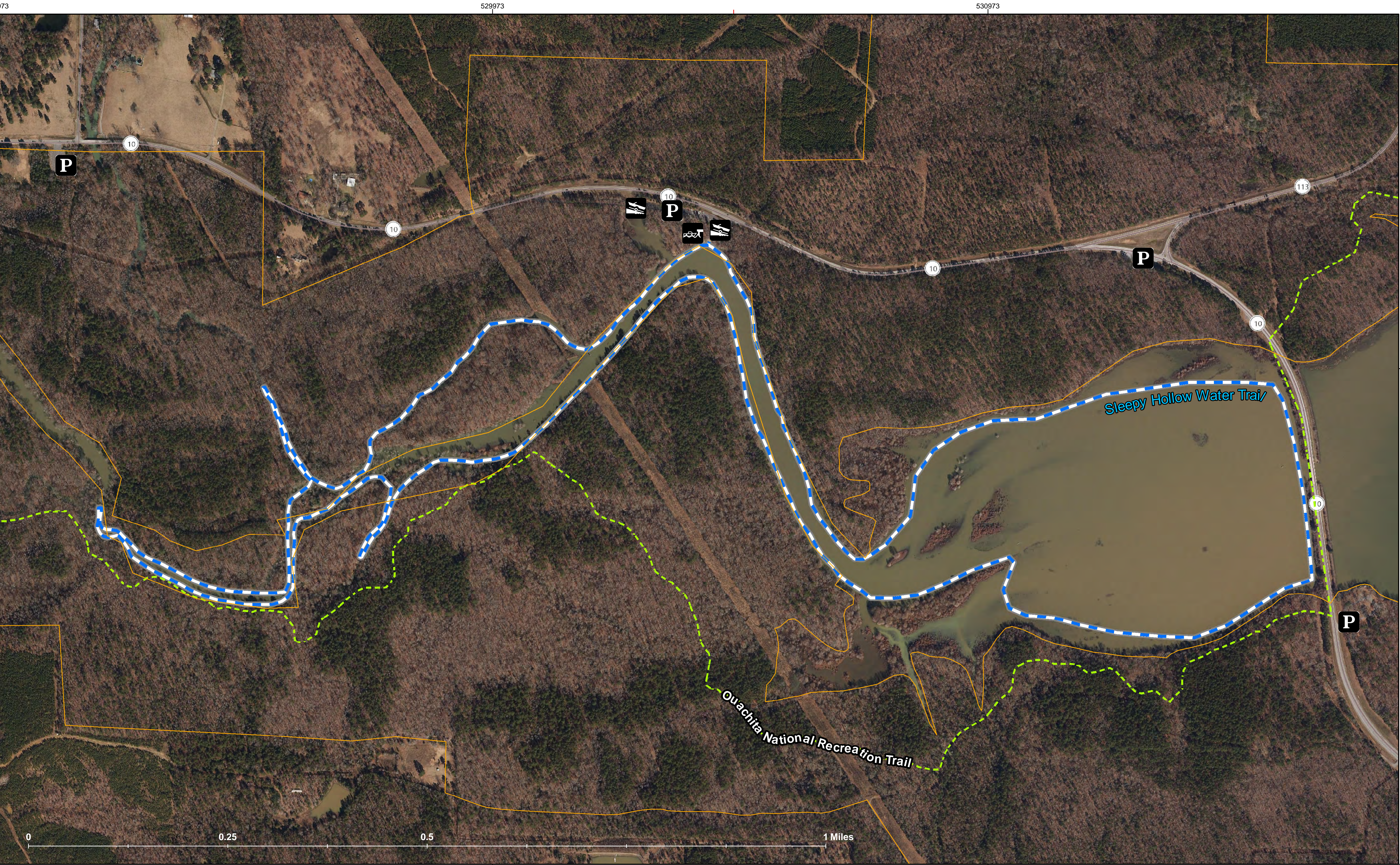
The river offers fishing for black bass, crappie and bream. Minnows, jigs, spinners and light line are recommended. Fish on the bottom of the bayou for catfish with worms, minnows and stink baits. Anglers pursue white bass during the spring spawn with jigs, crankbaits and live bait.

Hunting

This area is part of the Maumelle River Wildlife Management Area. Hunter pursue small game and bow hunt for deer. Learn more at agfc.com.

Important Numbers

Pulaski County EMS	911
Pulaski County Sheriff	(501) 340-6600
Stop Poaching Hotline	800-482-9262
Central Arkansas Water	501-377-1239



- Water Trail
- Nature Trail
- Courtesy Dock
- Parking Area
- Boating Access - Paved/Concrete
- WMA Boundary



Sleepy Hollow



This product is reproduced from geospatial information prepared by the GIS staff of the Arkansas Game and Fish Commission. Every attempt has been made to provide accurate information about areas. However, due to a wide range of factors the content accuracy or completeness of this product is not guaranteed. It is intended **for reference purposes only**. Represented features may not be in accurate geographic locations. Geospatial information may be corrected, updated, modified or replaced without notification at a later date. The boundaries reflected on maps are a representation of regulatory areas and are **not intended to be regarded as exact or proof of ownership**. To respect property rights and avoid trespass, always consult AGFCs Code of Regulations in addition to official surveys and other recorded land instruments, and adhere to the boundary signs and other on-site indicators. For more information, contact the GIS Coordinator at **(501) 223-6338 or gis@agfc.ar.gov**

www.agfc.com/watertrails