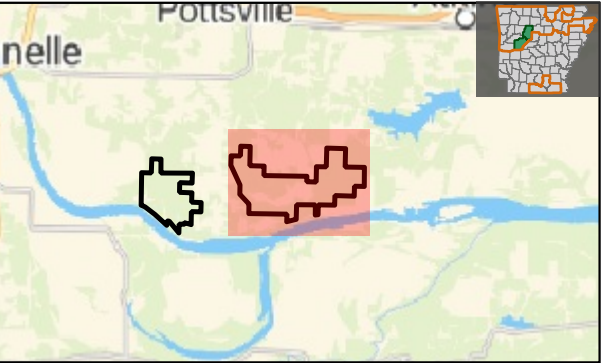
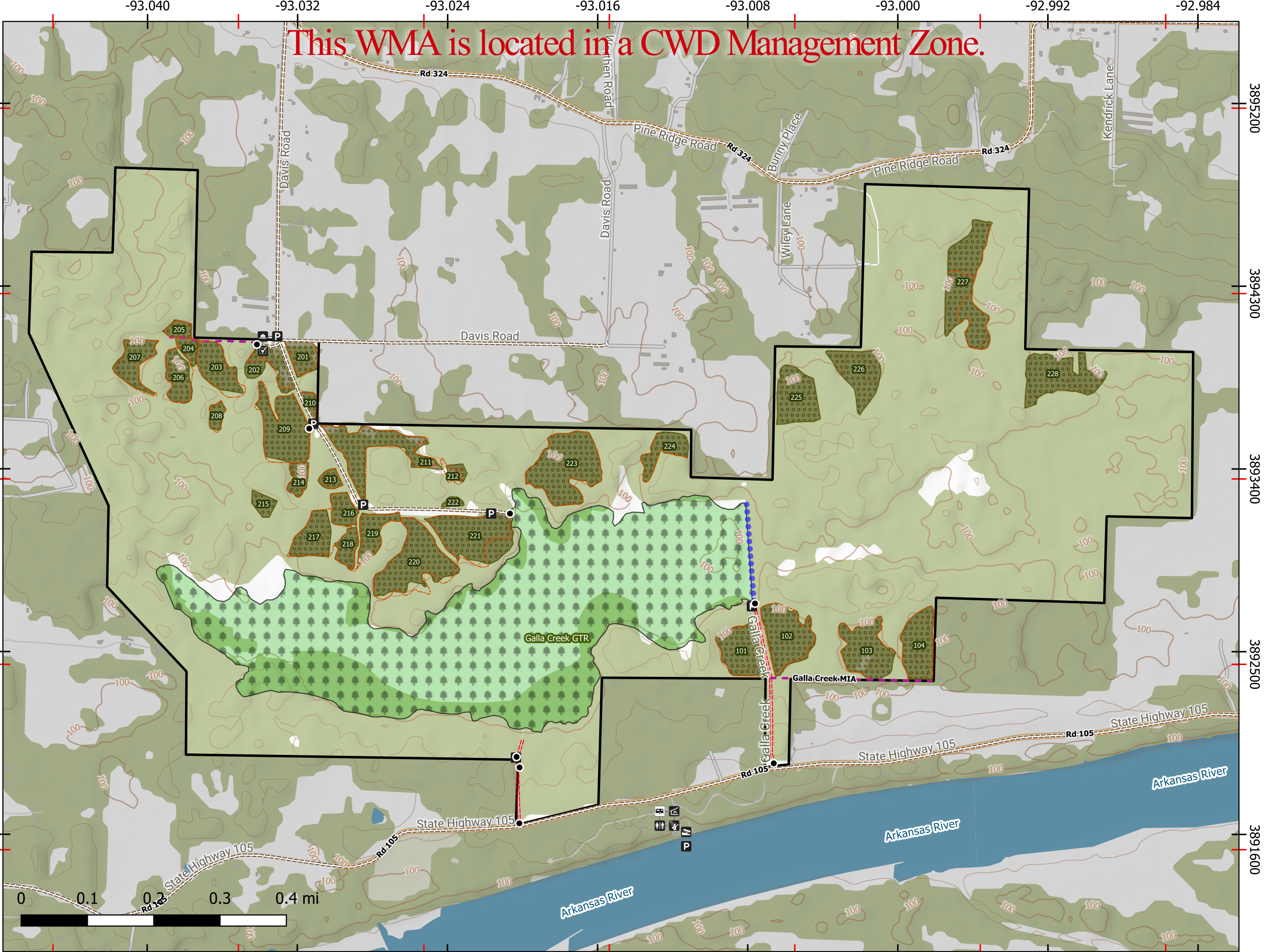




This WMA is located in a CWD Management Zone.

- Physical Point Features
- Gate
- Buildings/Facilities
- P Parking Area
 - WMA Headquarters
 - Restroom
 - Showers
 - Pavillion
 - RVs Allowed - Fee
 - Check Station
 - Boating Access - Paved/Concrete
- Public Access
- Firelane
 - Gravel Road - Vehicles Allowed
 - Gravel Road - No Motorized Vehicle
 - MIA Route
- Water Containment Features
- Dam
- WMA Boundaries
- WMA Boundary
- WMA Management Features
- Green Tree Reservoir
 - Wildlife Openings



This map is for informational purposes only and may not have been prepared for or be suitable for legal, engineering, or surveying purposes. It does not represent an on-the-ground survey and represents only the approximate relative location of property boundaries. This map may be updated without notice as new data becomes available. No warranty is made by the AGFC as to the accuracy, reliability, or completeness of these data for individual use or aggregate use with other data, and AGFC assumes no liability for any errors, omissions, or inaccuracies in the information.